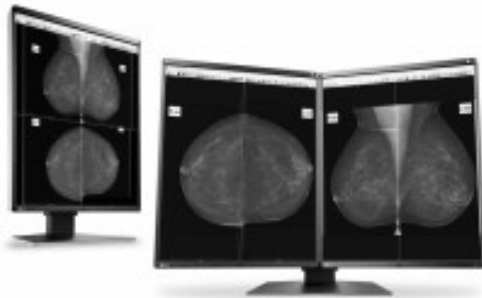
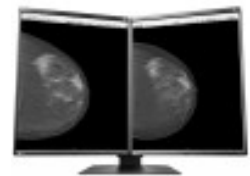


EIZO RADIFORCE GX560 / GX560-MD
5MP Mammo-diagnosemonitor, available in single or MammoDuo (dual monitor)
versions



RadiForce GX560 / GX560-MD



Productomschrijving:

The GX560 MammoDuo integrates two GX560 monitors side by side on a specifically designed stand.

Distraction-Free Viewing

With a 7.5 mm bezel, the world's narrowest bezel on a 5 megapixel monitor, the total distance between two side-by-side screens is only 15 mm. Furthermore the screen is almost completely flat with the bezel sitting only 2.5 mm above the screen.

Space Saving

Due to the thinner bezels, the GX560 MammoDuo is slimmer than two conventional 5 megapixel monitors by 67 mm horizontally, 36 mm vertically and 20.5 mm in depth. Furthermore, the total occupying space is reduced by 22%.

Easy Adjustment

With the newly designed stand, you can adjust the height, tilt, and swivel of the two monitors without any gaps appearing between them.

The RadiForce GX560 is also available as a single monitor and stand.

Evolve Your Image Reading

As more image modalities become digitalized, radiologists are viewing an increasing amount of information on their screens. EIZO's unique Work-and-Flow technology alleviates the complexity of the imaging workflow with new functions developed with the radiologist in mind. Users can take advantage of Work-and-Flow functions with the RadiForce monitor and bundled RadiCS LE software.

Barrier-Free Workstyle

With the Switch-and-Go function, you can operate two different workstations at the same time with a single mouse and keyboard. Work across several monitors by moving the cursor from one screen to the other or switch the signals between workstations as needed without having to change your mouse or keyboard each time. This makes it possible to reduce the number of monitors in the workflow and improves work efficiency.

Quick and Easy Focus

With the Point-and-Focus function, you can quickly select and focus areas of your concern with just your mouse and keyboard. Change the brightness and grayscale tones of certain points on the screen to make interpretation easier.

View Mammography Images Clearly

5 megapixel monitors allow you to see smaller details that are essential in digital mammography. The high resolution retains important information to prevent decreased image quality and pixelation that occurs when viewing at a lower resolution.

Optimum Breast Screening Monitor

The GX560 adopts an LTPS (Low Temperature Polysilicon) panel, which allows the monitor to achieve a maximum brightness of 2,500 cd/m². If calibrated to the recommended brightness of 1000 cd/m², EIZO guarantees 5 years of use.

Furthermore, it has a contrast ratio of 1700:1, displaying deep blacks and bright whites without any washout. This makes it suitable to use with breast tomosynthesis and mammography which require clear visibility.

High Definition Display with Smooth Transition

The monitor has a response time of 12 milliseconds, making it ideal for smoothly and continuously viewing tomographic images such as breast tomosynthesis, MRI and CT. In addition, with a pixel pitch of 0.165 mm and 10-bit (1,024 tones) simultaneous grayscale display, subtle density differences can be easily distinguished.

Achieve Clarity True to the Source Data

A medical monitor needs to be capable of high brightness in order to meet performance standards. However, in order to achieve high brightness in an LCD panel, the pixel aperture ratio has to be increased. This causes a typically unavoidable decline in sharpness. With EIZO's unique Sharpness Recovery technology, the decrease in sharpness (MTF) is restored. This allows you to display an image safely on the monitor that is true to the original source data, even at high brightness levels.

MTF measures numerically how faithfully the panel transfers detail from the original image data for viewing. When Sharpness Recovery is turned on, in the case of a 2 pixel line pair (spatial frequency of 1.515 cycles/mm) the MTF increases by approximately 45.5%.

Variations for Specific User Needs

EIZO offers anti-glare (AG) and anti-reflection (AR) screen variations to suit user environments. AG treatment is ideal for exceptionally bright environments and drastically reduces glare from ambient lighting. AR treatment is ideal for moderately-lit environments to reduce mild screen glare while maintaining crisp text and images.

Hassle-Free Multi-Monitor Configuration

Using the DisplayPort connection, you can drive several monitors in a daisy chain sequence. This allows you to configure a multi-monitor setup without the complicated hassle of excessive cabling.

Make the Precise Diagnosis

EIZO carefully measures and sets each grayscale tone to create a monitor compliant with DICOM Part 14. Furthermore, at startup or upon wakeup, the EIZO patented drift correction function quickly stabilizes the brightness level and compensates the brightness fluctuations caused by the ambient temperature and the passage of time, allowing medical images to be faithfully reproduced with stable brightness and grayscale.

Manage Effortless Quality Control

With the RadiCS LE software (included) and Integrated Front Sensor (IFS) built into the front bezel, you can easily calibrate to DICOM Part 14 without having to mount, run, and remove an external sensor.

Simple calibration using the monitor backlight sensor is also supported.

Select the Ideal Mode for Modalities

The CAL Switch function allows you to choose various modes for different modalities such as mammography, MRI, and endoscopy. It can be conveniently accessed using the monitor's front panel buttons to easily switch to optimal image viewing conditions.

Conserve Energy While Away

A presence sensor prompts the monitor to switch to power save mode when the user is away and resumes operation upon their return to conserve power when not in use, uniting convenience with savings.

Digital Mammography Monitor Quality Control Standards Compliance

EIZO's easy-to-use RadiCS UX2 quality control software & calibration sensor (sold separately) performs precise calibration conforming to DICOM Part 14 and enables quality control complying with ACR Practice Guideline and other QC standard for digital mammography monitors.

Rest Assured with Medical Qualifications

The monitor meets the strictest medical, safety, and EMC emission standards.

Technical data	
Panel	
Type	Monochrome IPS
Backlighting	LED
Size (in inches / cm)	21.3" (54.1 cm)
Maximum resolution	2048 x 2560
Aspect ratio	4:5
Visible image size	337.9 x 422.4 mm
Pixel Pitch	0.165 x 0.165 mm
Grayscale	10-bit (DisplayPort): 1,024 tones of a 16,369-tone palette (14-bit) 8-bit: 256 tones of a 16,369-tone palette (14-bit)
Viewing angle	178° / 178°

Brightness	2500 cd/m ²
Brightness recommended for calibration	1000 cd/m ² , 600 cd/m ²
Contrast	1700:1
Response time	12 ms (black-white-black)
Video input and Connectivity	
Video input	DisplayPort x 2, DVI-D (dual link)
Video output	DisplayPort (daisy chain)
Digital scanning frequency (H/V)	31 - 135 kHz / 23 - 61 Hz
USB	Upstream : USB 2.0: Type-B x 2 ; Downstream: USB 2.0: Type-A x 2
Performance and Power Consumption	
AC power supply	100 - 240 V: 50 / 60 Hz
Power consumption in normal mode	28 W
Max. power consumption	79 W
Max. standby power consumption	1 W or less
Additional Features	
Sensor	Backlight sensor, Integrated front sensor, Presence sensor, Ambient light sensor
Brightness stabilization	Yes
Digital uniformity equalizer	Yes
Work and Flow	Switch-and-Go, Point-and-Focus
CAL Switch preset modes	(DICOM, CAL1, CAL2, Text)
OSD languages	English, German, French, Italian, Japanese, Simplified Chinese, Spanish, Swedish, Traditional Chinese
Dimensions and Weight	
Net weight	GX560-MD, GX560-AR-MD: 17.1 kg ; GX560, GX560-AR: 8 kg
Weight without stand	5.2 kg
Compatible with VESA standard	100 x 100 mm
Certifications and Conformity	
Certifications	GX560, GX560-AR: CE / UKCA (Medical Device), ANSI/AAMI ES60601-1, CAN/CSA-C22.2 No. 60601-1, IEC/EN60601-1, VCCI-B, FCC-B, CAN ICES-3 (B), RCM, RoHS, China RoHS, WEEE, CCC, EAC
FDA	510(k) Clearance for breast tomosynthesis, mammography and general radiography
Accessories and Warranty	
RadiCS monitor quality control software	Supported
Warranty	5 years
Accessories included	GX560-MD, GX560-AR-MD: DisplayPort (3 m) x 4, DisplayPort (1 m) GX560, GX560-AR: DisplayPort (3 m) x 2
Other	GX560-MD, GX560-AR-MD: AC power cord (3 m) x 2, USB Type-A - USB Type-B cable (3 m) x 4, Utility Disk (RadiCS LE, PDF installation manual), instructions for use
Digital Uniformity Equalizer	Yes

Nombre Ecran: MammoDuo, 2 (MammoDuo)

Referentie EIZO001X