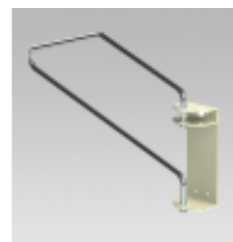


## WALL RACK FOR RADIATION PROTECTION CLOTHING Wall system for 1, 2, 3, 4 or 5 swivel, left or right stop.



### Product description:

The chromed swivel calipers give you a 180° radius of action. Folded against the wall parallel to each other, the brackets save you space. Do you need a wall system to store up to 10 items of clothing, with optimal use of space and excellent ergonomics? The combination of left stop and right stop systems is the ideal solution. The basic platform allows for trouble-free mounting of the two systems side by side.

Practical metal construction, painted in the colour: medical white (RAL 9002), chromed swivel bracket.

- Dimensions (h x w): 205 x 148 x 670 mm
- Right or left stop
- Max capacity: 1, 2, 3, 4 or 5
- Own weight / payload: 4.3 kg / 60 kg
- Support for front aprons; blouses and suits

### References :

References	Number of Arms	Stop Side
100/1	1	180°
100/2L	2	Left
100/2R	2	Right
100/3L	3	Left
100/3R	3	Right
100/4L	4	Left
100/4R	4	Right
100/5L	5	Left
100/5R	5	Right

Wall rack - Stop side: Right stop, Left stop, 180°

Wall rack - 1, 2 ou 3: 2, 3, 4, 5, 1



MEDICAL EQUIPMENT, ACCESSORIES AND CONSUMABLES FOR MEDICAL IMAGING.

Reference: 100/XX