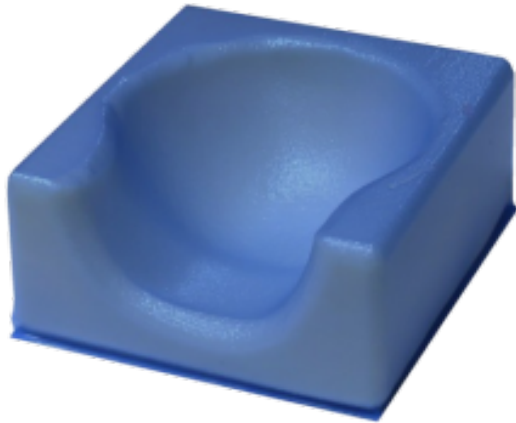


PROFOAM HEAD – HEAD AND HEAD/NECK POSITIONING SUPPORT ProFoam positioning aid for head support in radiology



Product description:

The **ProFoam Head** positioning aids are designed to provide **stable and comfortable head support** for patients during medical imaging examinations.

Made from a **dimensionally stable foam material**, the positioning aids are **welded into a durable polyurethane (PU) film**, ensuring **optimal hygiene** and **high resistance to medical disinfectants**.

The ProFoam Head models are intended for use when patients are **lying supine** on the examination table. A dedicated version provides **additional neck support**, improving comfort and stability throughout the procedure.

- **Head and head/neck positioning aids**
- **Hygienic foam welded in PU film**
- **Easy to clean, residue-free surface**
- **High durability**, even with frequent disinfection
- **Suitable for radiology and medical imaging**

Available models:

- **ProFoam Head** – head support
Dimensions: 25 × 25 × 12 cm
- **ProFoam Head/Neck** – head and neck support
Dimensions: 24 × 22 × 10 cm

Head positioning wedge format: Head, Head / Neck

Reference: -