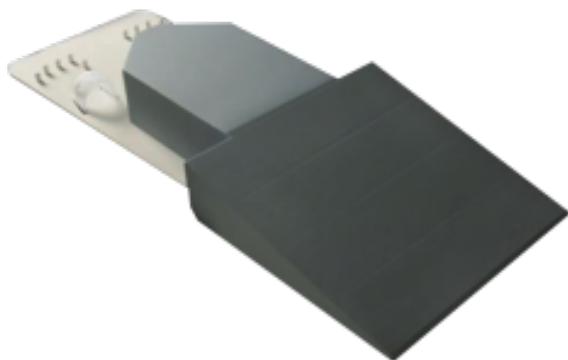


## HAND SUPPORT FOR SPECT/CT - PET/CT PROCEDURE

**The hand support is specially designed to facilitate a comfortable position for the patient during medical procedures**



### **Product description:**

The hand support is specially designed to facilitate a comfortable position for the patient during SPECT/CT - PET/CT procedures, while maintaining proper alignment. This product gives a good stability and reproducibility regarding imaging of the hands in a fixed position.

### Main applications

- Research
- Hospital

### Specifications

Overall dimensions (l x b x h) 120 x 48 x 13 cm approx.

Reference: 935.200