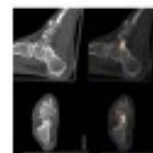


FOOT SUPPORT FOR SPECT/CT - PET/CT

Support design to facilitate a comfortable position for the patient during medical procedures



Product description:

This support is specially designed to facilitate a comfortable position for the patient during a SPECT/CT - PET/CT medical procedures, while maintaining proper foot alignment.

This support promotes patient comfort and is ideal for use during lengthy procedures as they contribute to better stability and reproducibility, regarding the target area.

Specifications

Overall dimensions 51 x 30 x 26 in cm (approximate)

Art. Number

888.100 foot support G PET & 886.113 Wedge V

Reference: 888.300